

LISTENING #1

SECTION 1. Questions 1-10

Questions 1-4

Complete the notes below:

Write **NO MORE THAN THREE WORDS** for each answer.

NOTES ON SPORTS CLUB

Example answer:

Name of club:**Kingswell**

Facilities available:

Golf

1 _____

2 _____

Classes available:

Kick-boxing

3 _____

Additional facility:

4 _____ (restaurant opening soon)

Questions 5-8

Complete the table below:

Write **NO MORE THAN TWO NUMBERS** for each answer.

MEMBERSHIP SCHEMES					
Type	Use of facilities	Cost of classes	Times	Joining fee	Annual subscription fee
GOLD	All	Free	Any time	£250	5. £ _____
SILVER	All	6. £ _____	From 7. _____ to	£225	£300
BRONZE	Restricted	£3	From 10.30 to 3.30 weekdays only	£50	8. £ _____

Question 9 and 10

Complete the sentences below:

Write **ONE WORD ONLY** for each answer.

9. To join the centre, you need to book an instructor's-_____.

10. To book a trial session, speak to David _____. (0458 95311).

SECTION 2. Questions 11-20

Questions 11-16

What change has been made to each part of the theatre?

Choose **SIX** answers from the box and write the correct letter, **A-G**, next to questions 11-16.

RIVENDEEN CITY THEATRE

- A. doubled in number
- B. given separate entrance
- C. reduced in number
- D. increased in size
- E. replaced
- F. strengthened
- G. temporarily closed

Part of the theatre

- 11. box office.....
- 12. shop.....
- 13. ordinary seats.....
- 14. seats for wheelchair users.....
- 15. lifts.....
- 16. dressing room.....

Questions 17-20

Complete the table below.

Write **NO MORE THAN TWO WORDS AND/OR A NUMBER** for each answer.

Play	Dates	Starting time	Tickets available	Price
Royal Hunt of the Sun	October 13th to 17. _____	18. _____ pm	For 19. _____ and _____	20. £ _____

SECTION 3. Questions 21-30

Questions 21

Choose the correct letter; **A**, **B** or **C**.

21. What is Brian going to do before the course starts?

A. attend a class

B. write a report

C. read a book

Questions 22-25

Complete the table below.

Write **NO MORE THAN TWO WORDS** for each answer.

College Facility	Information
Refectory	inform them 22. _____ about special dietary requirements
23. _____	long waiting list, apply now
Careers advice	drop-in centre for information
Fitness centre	reduced 24. _____ for students
Library	Includes books, journals, equipment room containing audio-visual materials
Computers	ask your 25. _____ to arrange a password with the technical support team

Questions 26-30

Complete the summary below.

*Write **NO MORE THAN TWO WORDS** for each answer.*

Business Centre

This Business Resource Centre contains materials such as books and manuals to be used for training. It is possible to hire **26**_____ and

27_____. There are materials for working on study skills (e.g. **28**_____) and other subjects include finance and

29_____. **30**_____ membership costs £50 per year.

SECTION 4. Questions 31-40

Questions 31-37

Complete the table below.

Write **NO MORE THAN TWO WORDS** for each answer.

Social History of the East End of London

Period	Situation
1st-4th centuries	Produce from the area was used to 31 _____ the people of London.
5th-10th centuries	New technology allowed the production of goods made of 32 _____ and .
11th century	Lack of 33 _____ in the East End encouraged the growth of businesses.
16th century	Construction of facilities for the building of 34 _____ stimulated international trade. Agricultural workers came from other parts of 35 _____ to look for work.
17th century	Marshes were drained to provide land that could be 36 _____ on.
19th century	Inhabitants lived in conditions of great 37 _____ with very poor sanitation.

Questions 38-40

Choose **THREE** letters, **A-G**

Which **THREE** of the following problems are mentioned in connection with 20th century housing in the East End?

- A. unsympathetic landlords*
- B. unclean water*
- C. heating problems*
- D. high rents*
- E. overcrowding*
- F. poor standards of building*
- G. houses catching fire*

LISTENING #2

SECTION 1. Questions 1-10

Questions 1-10

Complete the notes below.

Write **NO MORE THAN TWO WORDS AND/OR A NUMBER** for each answer.

BIRMINGHAM EXHIBITION

- Open in: **1.** _____ .
- Length of exhibition: **2.** _____ .
- A wide range of manufacturers will be showcased.
- Some cars are available to observe and others are for **3.** _____ .
- The **4.** _____ is prohibited to take into the museum.
- Every ticket includes one free photo.
- Price of the ticket: **5.** £ _____ (in advance).
- Transfer to Mark **6.** _____ (Box Office Manager).
- Held in the **7.** _____ Palace this year.
- Not far from **8.** _____ .
- Website: www. **9.** _____ .com.
- Best way to contact: **10.** _____ .

SECTION 2. Questions 11-20

Questions 11-15

Answer the questions below. Choose the correct letter, **A**, **B**, or **C**.

11. How many patients does the hospital consult every year?

1. 3,000.
2. 5,000.
3. 11,000.

12. When can patients meet the female doctor?

1. On weekday mornings.
2. Three days a week.
3. Only on Mondays and Fridays.

13. Who is the expert on treating hearing loss?

1. Mr. Roberts.
2. Mr Green.
3. Mr. Edwards.

14. Where are patients recommended to buy their medicine?

1. The supermarket in the town.
2. Pharmacies nearby the city centre.
3. The health care's pharmacy.

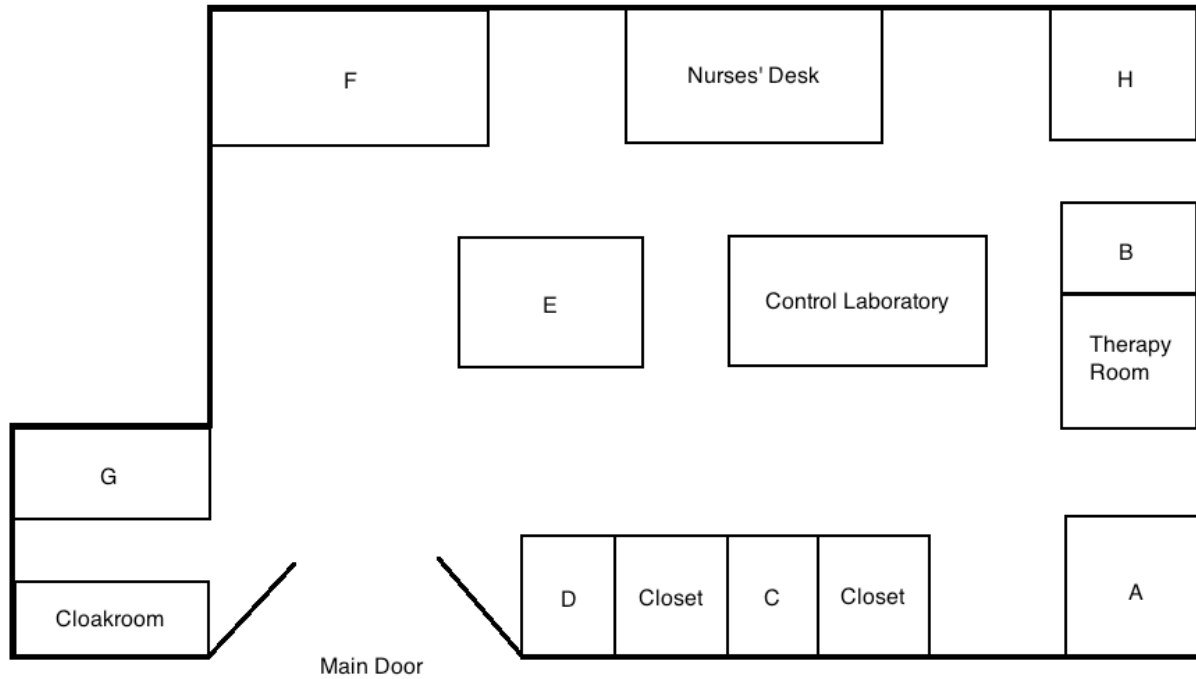
15. What will the patients be asked about whether they are willing to do?

1. Letting one student attend the consultation.
2. Asking postgraduate students to do treatment.
3. Meeting students in group discussion.

Questions 16-20

Label the map below.

Write the correct letter, **A-H**, next to questions 16-20.



16. Reception _____

17. Mr. Green's room _____

18. Medical Records Office _____

19. Surgery Room _____

20. Manager's Office _____

SECTION 3. Questions 21-30

Questions 21-25

What is the main opinion of each of the following people?

Choose **FIVE** answers from the box and write the correct letter, **A-G**, next to questions 21-25.

Opinions

A lightning restrictions

B alternative lighting

C reduce the number of insects

D decline in the number of species

E climate changes

F impacts on the growth of animals

G impacts on water quality

21. Ken Simpson _____

22. Dave Kepler _____

23. Sharon Grey _____

24. Maria Jackson _____

25. Barbara Swallow _____

Questions 26 and 27

Choose the correct letter, **A**, **B** or **C**.

26. What does Jim think about the difference among species in natural and artificial light?

- A. It makes no difference.
- B. Species will die out in natural light.
- C. Species will die out in artificial light.

27. One reason why Jim and Jane felt unsatisfied about the theories discussed in the lecture was that

- A. governments didn't increase any spending on them.
- B. most theories had nothing to do with the exam.
- C. many theories lack solid proof in the field.

Questions 28-30

Choose **THREE** letters, **A-G**.

Which **THREE** topics are they interested in studying in the future?

A quality of life tourism

B wildlife park animals

C migration birds

D animals living in rural areas

E animals living in tropical climate

F the impact of different environment on animals

G pandas in the zoo

SECTION 4. QUESTIONS 31-40

Questions 31 and 32

Choose **TWO** letters, **A-E**

Which **TWO** aspects did the new rules at the end of the 19th century focus on?

- A** cooperation
- B** competition
- C** moral values
- D** player's physical protection
- E** business model

Questions 33-40

Complete the sentences below.

Write **ONLY ONE WORD** for each answer.

Football in the UK

- At present the main reason why UK schools push football education is the pressure from **33.** _____ .
- Prior to the 19th, football players used different **34.** _____ of rules.
- People attempted to standardise the rules from the whole **35.** _____ , known as the 'Cambridge Rules' in 1848.
- Attendances were increasing due to the improvement of infrastructure and the **36.** _____ system.
- Football became popular and it is regarded as a **37.** _____ event.
- The football clubs were responsible for most of the **38.** _____ and development for the football association.
- **39.** _____ against other teams were also organised by the football clubs.
- In the 1910s, **40.** _____ football players were approved of in the game.